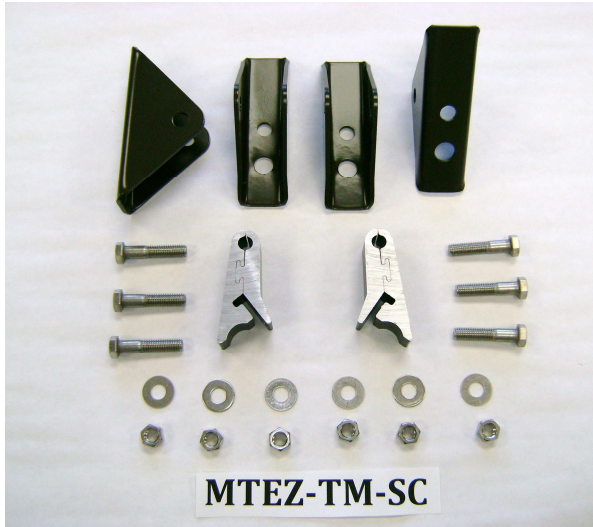


# Hardware Instructions for North Star Series Collectors: MTEZ-TM-SC (EZ ArrayTilt Mount)



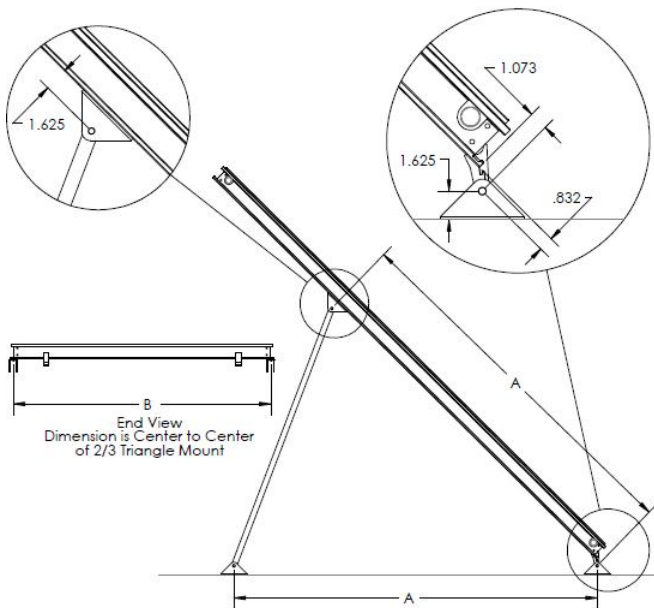
The Tilt Mount hardware is shipped in sets of two front mount and two rear mounts, enough hardware to secure one collector.

Each set contains:

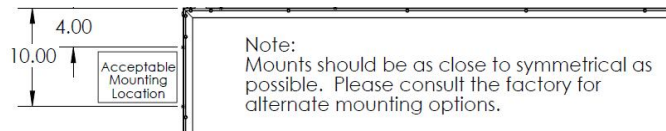
- (2) Two-piece hinge mounts
- (4) Triangle Mounting Feet
- (6) 1-3/4" x 3/8" -16 Stainless Steel Bolts
- (6) 3/8" -16 Stainless Steel Nuts
- (6) 3/8" Stainless Steel Washers

## Installation Instructions

- Mount triangle feet to structure or Uni-Strut<sup>TM</sup> at proper front-to-back and side to side spacing according to collector size, in accordance with the diagram shown
- Front mount side-to-side spacing should be in accordance with the diagram shown for the front mounts. This will be between 4" to 10" from the corner of the collector frame
- Back mounts side to side dimensions are fixed at 46.875" center to center for 4' wide collectors (NSC-26,28,32,40) and 34.875" center to center for 3' wide collectors (NSC-21,24)
- The triangle foot mounts can be fastened to Uni-Strut<sup>TM</sup> or directly to the asphalt roof using the appropriate fasteners and sealant



|   | NSC-21 | NSC-24 | NSC-26 | NSC-28 | NSC-32 | NSC-40 |
|---|--------|--------|--------|--------|--------|--------|
| A | 58.125 | 64.625 | 51.375 | 58.125 | 66.125 | 82.00  |
| B | 34.875 | 34.875 | 46.875 | 46.875 | 46.875 | 46.875 |



Solar Skies Mfg, LLC

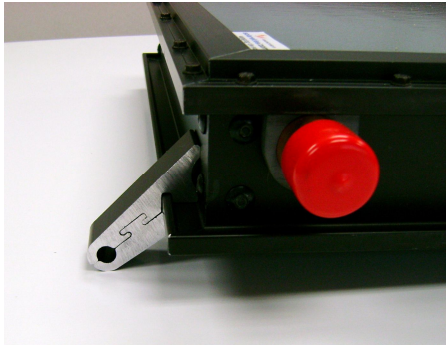
106 Donovan Drive • Alexandria, MN 56308 • Ph 320-762-1151 Fax 320-762-1460

## MT-TM-SC (Tilt Mount) – Cont.

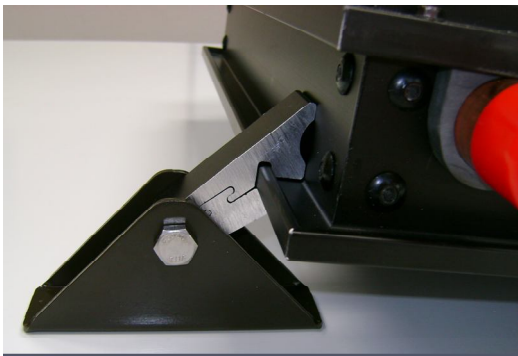


### Front Mounts

- Slide apart the halves of the hinge mount



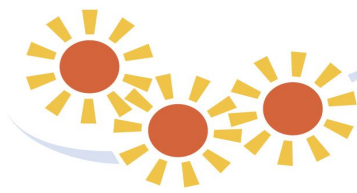
- Reassemble over the bottom frame rail lip
- Slide the hinge mount to desired location along the bottom side of the collector that will meet the roof.



- Attach the triangle foot to the hinge mount with the 1.75" x 3/8" bolt, 3/8" nut and washer.

Solar Skies Mfg, LLC

106 Donovan Drive • Alexandria, MN 56308 • Ph 320-762-1151 Fax 320-762-1460

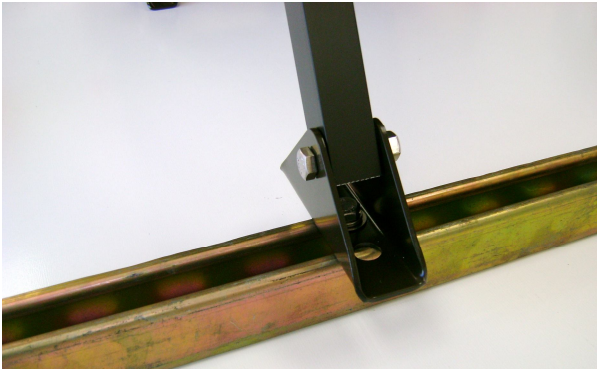


**solarskies™**  
engaging the sun

### Back Mounts



Position the pre-cut and drilled E-1022 strut into the 2/3 triangle mount on the back of the collector and align the hole in the strut with the holes in the 2/3 triangle mount. Insert the 1-3/4" x 3/8" bolt and secure with a 3/8" nut and washer.



- Position the E-1022 strut into the triangle foot and align the hole in the strut with the holes in the triangle foot. Insert the 1-3/4" x 3/8" bolt and secure with a 3/8" nut and washer



- When all hardware and fasteners are installed, the assembly will look similar to the photo shown.
- Check for collector alignment and tighten all fasteners

**Solar Skies Mfg, LLC**

106 Donovan Drive • Alexandria, MN 56308 • Ph 320-762-1151 Fax 320-762-1460